

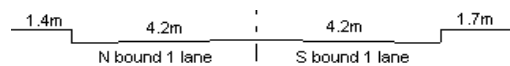
YEAR 2013

CORE STATION 5014

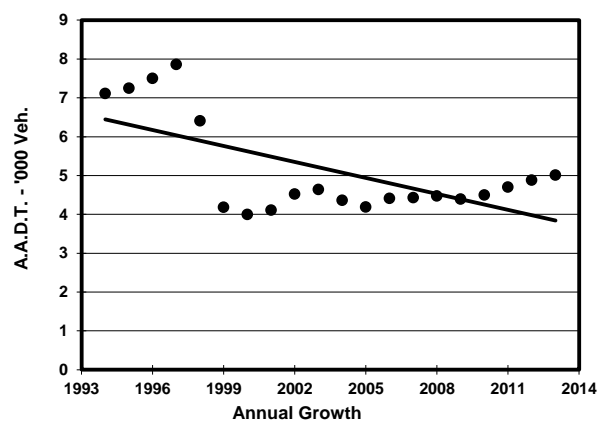
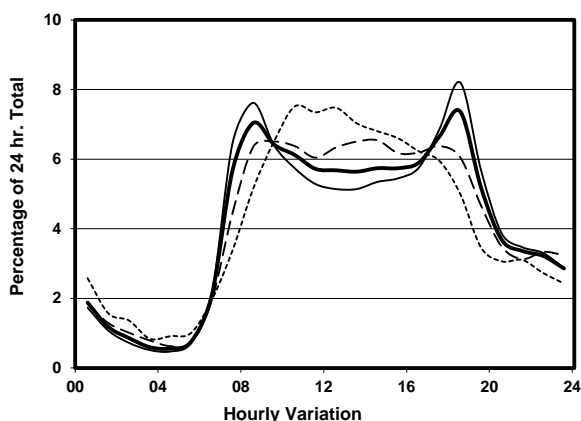
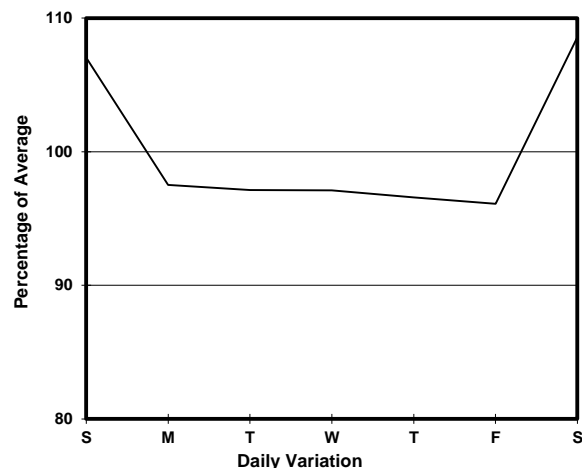
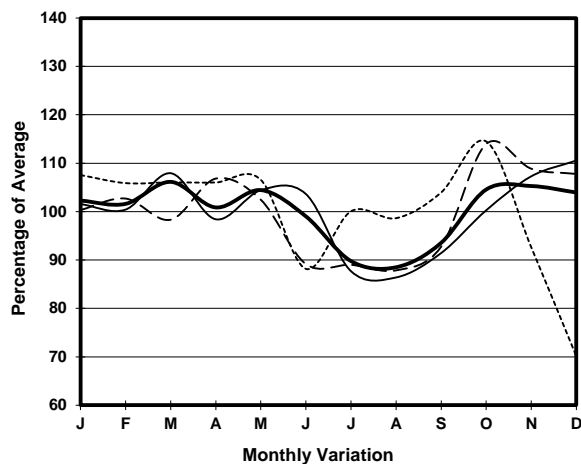
ROAD NETWORK MAJOR

ROAD TYPE RURAL ROAD

LINK ROUTE TWISK (from CHUEN LUNG to CHEUNG PEI SHAN RA)



1. TRAFFIC FLOW VARIATION AND GROWTH



2. TRAFFIC CHARACTERISTICS (BY DIRECTION)

Parameter	All - Day	Mon. - Fri.	Sat.	Sun.
SOUTH BOUND				
A.A.D.T.	2520	2460	2680	2590
R 12 / 24 - %	76	76.1	75	76.4
R 16 / 24 - %	89.4	89.6	88.8	88.3
AM Peak Hour	0800-0900	0800-0900	0800-0900	0900-1000
One-way flow at AM peak hour	200	220	170	150
T - % (AM)	-	1.4	-	-
PM Peak Hour	1800-1900	1800-1900	1700-1800	1700-1800
One-way flow at PM peak hour	200	210	190	190
T - % (PM)	-	9.1	-	-
Prop.of commercial vehicles - 16 hr.	-	4.1	-	-
NORTH BOUND				
A.A.D.T.	2490	2380	2730	2750
R 12 / 24 - %	71.5	70.7	72.9	73.7
R 16 / 24 - %	89.1	88.9	88.3	86.6
AM Peak Hour	0900-1000	0900-1000	0900-1000	0900-1000
One-way flow at AM peak hour	160	150	180	200
T - % (AM)	-	1	-	-
PM Peak Hour	1800-1900	1800-1900	1600-1700	1600-1700
One-way flow at PM peak hour	170	190	180	160
T - % (PM)	-	1.8	-	-
Prop.of commercial vehicles - 16 hr.	-	3	-	-

3. OTHER INFORMATION AND COMMENT

4. Vehicle classification and occupancy - Monday to Friday

Time		Class of vehicle									
		Motor Cycle	Private Car	Taxi	Private LB	PLB	Goods veh.		Non Fr. Bus	Fr. Bus	
							Light	M & H		SD	DD
0700-0800	Pro	4.0	60.0	0.0	0.0	10.0	22.0	2.0	0.0	2.0	0.0
	Ocp	1.0	1.5	0.0	0.0	7.6	2.3	1.0	0.0	20.3	0.0
0800-0900	Pro	6.2	57.3	3.7	0.0	7.5	22.4	0.0	1.2	1.6	0.0
	Ocp	1.0	1.3	1.7	0.0	6.8	1.6	0.0	1.0	22.8	0.0
0900-1000	Pro	0.0	67.4	4.5	1.5	4.5	18.0	3.0	0.0	1.1	0.0
	Ocp	0.0	1.6	1.3	3.0	8.0	2.2	1.0	0.0	8.3	0.0
1000-1100	Pro	4.5	36.0	9.0	0.0	13.5	33.7	2.2	0.0	1.1	0.0
	Ocp	1.5	1.9	1.8	0.0	4.5	1.5	2.0	0.0	10.5	0.0
1100-1200	Pro	5.0	53.3	5.0	0.0	5.0	30.0	0.0	0.0	1.7	0.0
	Ocp	1.0	1.3	1.0	0.0	8.7	1.4	0.0	0.0	6.0	0.0
1200-1300	Pro	3.5	49.6	8.9	0.0	5.3	28.3	3.5	0.0	0.9	0.0
	Ocp	1.0	1.4	1.4	0.0	6.3	1.8	1.5	0.0	5.0	0.0
1300-1400	Pro	6.4	49.2	6.4	0.0	4.8	31.7	0.0	0.0	1.6	0.0
	Ocp	1.0	1.4	1.0	0.0	9.7	1.7	0.0	0.0	11.5	0.0
1400-1500	Pro	2.2	60.7	9.0	0.0	6.7	18.0	0.0	2.2	1.1	0.0
	Ocp	1.0	1.6	2.3	0.0	6.3	1.6	0.0	1.0	3.0	0.0
1500-1600	Pro	6.1	55.1	4.1	0.0	4.1	24.5	4.1	0.0	2.0	0.0
	Ocp	1.0	1.7	1.5	0.0	5.5	1.7	1.5	0.0	10.0	0.0
1600-1700	Pro	2.9	41.6	12.9	0.0	2.9	33.0	5.7	0.0	1.1	0.0
	Ocp	1.0	1.4	1.7	0.0	4.0	1.4	1.3	0.0	4.7	0.0
1700-1800	Pro	5.2	56.9	0.0	3.4	5.2	25.9	0.0	1.7	1.7	0.0
	Ocp	1.0	1.9	0.0	2.5	6.3	1.3	0.0	1.0	6.3	0.0
1800-1900 Peak hour	Pro	5.5	56.4	0.0	0.0	10.9	21.8	3.6	0.0	1.8	0.0
	Ocp	1.0	1.3	0.0	0.0	4.8	1.3	1.5	0.0	10.5	0.0
1900-2000	Pro	7.5	72.2	2.2	0.0	3.2	12.9	1.1	0.0	0.8	0.0
	Ocp	1.1	1.4	2.5	0.0	4.0	1.3	1.0	0.0	8.7	0.0
2000-2100	Pro	3.7	76.7	7.3	1.8	7.3	1.8	0.0	0.0	1.4	0.0
	Ocp	1.5	1.5	2.5	1.0	5.5	1.0	0.0	0.0	3.7	0.0
2100-2200	Pro	18.8	49.4	16.5	2.4	2.4	7.1	0.0	2.4	1.2	0.0
	Ocp	1.0	1.5	1.3	2.0	6.0	1.3	0.0	1.0	3.0	0.0
2200-2300	Pro	8.3	63.9	5.6	0.0	8.3	8.3	2.8	0.0	2.8	0.0
	Ocp	1.0	1.5	1.5	0.0	3.7	1.3	1.0	0.0	2.5	0.0
16 hours	Pro	5.4	57.2	5.6	0.5	6.1	21.6	1.7	0.4	1.4	0.0
	Ocp	1.1	1.5	1.6	2.2	6.1	1.6	1.3	1.0	9.5	0.0

Legend

- Pro.** Proportion of vehicles in % (Sum may not add up to 100% due to figure rounding)
- Ocp.** Average occupancy of vehicles
- M&H** Medium and Heavy